

January - March 2024

IMPORTANT TRAINING INFORMATION:

In this 2024 MountainHeart South training calendar, the Professional Development Team is beginning to transition, with your safety in mind, to more face to face trainings.

For the January through March quarter, the training calendar offers online and face to face trainings at a variety of times and locations. You may register for trainings on your WV STARS account. Please make sure your contact information is correct.

When face-to-face trainings are held, class sizes will be limited and social distancing guidelines per the CDC will be implemented and must be followed by all participants.

This Winter quarter some professional development sessions will be online and face to face.

Registration information can be found at www.wvstars.org/



Alphabetical List of Training Topics for January-March 2024

*This Winter quarter some professional development sessions will be online and face to face.
Registration information can be found at www.wvstars.org/*

Topic: Being a H.E.R.O Showing Honesty, Empathy, Respect and Open-Mindedness for children

Core Knowledge and Competencies: *1 hr. Environment and Curriculum & 1hr. Professionalism and Leadership*

WVELSF: Social Emotional Development **Target Audience:** Adults **Tier:** Intermediate
Summary: Children learn through their environment. We want children to develop the social/emotional skills of showing honesty, empathy, respect and open-mindedness (acceptance) towards the adults and peers in their lives. In this developmental session we will learn that it takes the adults in the lives of children to help them learn these necessary skills. Participants will learn ideas and strategies to become the Hero's in the lives of the children they encounter by using the skills of honesty, empathy, respect and open-mindedness. **This training will be in person.**

Topic: Emergency Preparedness: Working to Lessen the Impact of Traumatic Events in Your Childcare Program

Core Knowledge and Competencies: *3 hrs. Health, Safety, and Nutrition*

WVELSF: All Domains **Target Audience:** Adults **Tier:** Intermediate

Summary: According to the Children's Health Fund of Colombia University, children affected by large disasters are five times more likely to have serious emotional issues than those who are unaffected. In this professional development session, participants will learn to help lessen the trauma for children by understanding the importance of preparation for emergencies in their childcare program. **This training will be in person.**

Topic: Infant Toddler Environmental Rating Scale (ITERS-3) -Overview

Core Knowledge and Competencies: *2 hrs. Environments and Curriculum*

Target Audience: Adult Caregivers of Infant & Toddlers **Tier:** Intermediate

Summary: This Course is an overview of the Infant/Toddler Environmental Rating Scale ITERS-3. Participants will learn how to use the ITERS-3 to improve environments and interactions for infants and toddlers in the classroom setting. **This training will be in person.**

Topic: Quality Counts

Core Knowledge and Competencies: *1hr. Professionalism and Leadership*

WVELSF: All Domains **Target Audience:** Adults **Tier:** Intermediate

Summary: Why does high - quality childcare matter? Because the need for quality childcare has never been greater! But what does it look like in our state? And how can we help? Through group discussion and the use of media, early childhood educators will examine program supports that are necessary to achieve and maintain quality childcare and the important role they play within the process. **This training will be in person.**



Topic: Spreading HOPE

Core Knowledge and Competencies: .75hrs. *Child Growth and Development* & .75hrs. *Family and Community Relationships*



WVELSF: All Domains

Target Audience: Adults

Tier: Intermediate

Summary: The HOPE training will cover the effects of ACEs on health outcomes, the importance of positive childhood experiences, and the research showing their mitigating effects on ACEs as well as the biological basis for these effects. We will introduce the four building blocks of HOPE and discuss type 1 vs. type 2 thinking. The presentation will present some ideas of how to incorporate the HOPE Framework into practice. **This training will be in person.**

Topic: Supporting Culturally Diverse Environments Module Series

Core Knowledge and Competencies: 3 hrs. *Family and Community Relationships*, 3 hrs. *Environment and Curriculum*

WVELSF: All Domains

Target Audience: Adults

Tier: Advance

Summary: In childcare, we often miss the importance of understanding an all inclusive environment. In this module series, we are going to discuss the difference of diversity, cultural, equality, and equity within our childcare settings. You will learn the importance of creating an environment, using ERS tools and gain knowledge in culturally supported activities that changes the way children interact and provide support to children of all cultural backgrounds. **This training will be in person.**

Topic: Supporting Language Development in Infant & Toddlers

Core Knowledge and Competencies: 2 hrs. *Child Growth and Development*

WVELSF: Language and Literacy Development

Target Audience: Adult Caregivers of Infant & Toddlers

Tier: Intermediate

Summary: This Course is an overview of language development in infant and toddlers, keys to engage and support infants and toddlers as active learners of language, and implementing responsive communication in the classroom. **This training will be in person.**

Topic: Teacher, Teacher What Do You See?

Core Knowledge and Competencies: 2 hrs. *Child Observation and Assessment*

WVELSF: Approaches to Learning

Target Audience: Adults

Tier: Intermediate

Summary: Effective observing doesn't just happen. It involves thoughtful planning. In this professional development session, participants will learn how to properly observe and how practice makes perfect. **This training will be in person.**

Topic: The Five Cs of ADHD Guidance

Core Knowledge and Competencies: *1hr. Child Growth and Development & 1hr. Environment and Curriculum*

WVELSF: All Domains

Target Audience: Adults

Tier: Advanced

Summary: Learn about Attention Deficit Hyperactivity Disorder, also known as ADHD, and how it affects children and adults. In this session, information will be given about ADHD, the different types, how the brain develops differently, executive functioning, and how big feelings affect those with the disorder. Will discuss how these will affect a child's behavior in a learning environment and at home. It will then be looked at in detail of how you can use self-control, compassion, collaboration, consistency and celebration to help guide children with Attention Deficit Hyperactivity Disorder. **This training will be in person.**

Topic: Utilizing the Environmental Rating Scale to Achieve Higher Program Quality

Core Knowledge and Competencies: *1hr. Professionalism and Leadership & 1hr. Administration and Management*

WVELSF: All Domains

Target Audience: Adults

Tier: Intermediate

Summary: This session will include an overview of the most recent versions of the Environment Rating Scales as well as information on how to use the information from the self-assessment to improve program quality through goal setting and the creation of action plans and professional development plans. This training will be applicable to staff and administrators of childcare centers, facilities, and family child care home programs. **This training will be in person.**

Topic: West Virginia Early Learning Standards Framework Pre-K with Lesson Planning Module

Core Knowledge and Competencies: *2 hrs. Child Growth and Development, 2 hrs. Child Observation and Assessment, 2 hrs. Environment and Curriculum*

WVELSF: All Domains

Target Audience: Adults

Tier: Basic

Summary: In this 3-part module series geared towards Pre-K teachers, you will receive an in depth look at the WV Early Learning Standard Framework. You will learn about each of the content areas, domains, clusters, and standards and then how to connect them to a lesson plan. As a group, we will brainstorm ways teachers can meet the goals in the standards. At the end of the series, teachers will have a completed lesson plan to take with them to reference when planning future lessons and activities. **This training will be in person.**

Topic: What is DAP?

Core Knowledge and Competencies: *1 hr. Child Growth and Development & 1 hr. Environment and Curriculum*

WVELSF: All Domains

Target Audience: Adults

Tier: Intermediate

Summary: According to NAEYC, developmentally appropriate practice, often shortened to DAP, is an approach to teaching grounded in research on how young children develop and learn. It is a framework designed to promote young children's optimal learning and development. **This training will be in person.**


Professional Development Calendar January-March 2024

In Person Training

Greenbrier County/MountainHeart Office, 248 Red Oaks Shopping Center, Ronceverte, WV 24901

January 17, 2024	3:00pm-5:00pm	Supporting Language Development in Infant & Toddlers
March 19, 2024	6:00pm-8:00pm	Being a HERO
March 28, 2024	10:00am-12:00pm 1:00pm-3:00pm	Teacher, Teacher What Do You See? What is DAP?

Mercer County/MountainHeart Office, 1411 N. Walker St., Princeton, WV 24740

January 31, 2024	10:00am-12:00pm 1:00pm-3:00pm	Teacher, Teacher What Do You See? What is DAP?
February 20, 2023	5:00pm-7:00pm	Supporting Language Development in Infant & Toddlers
February 21, 2024	4:00pm-5:00pm	Quality Counts 
March 6, 2024	5:00pm-7:00pm	The Five Cs of ADHD Guidance

Nicholas County/MountainHeart Office, 1020 Broad St., Summersville, WV 26651

January 9, 2024	5:30pm-7:00pm	Spreading Hope 
January 25, 2024	2:00pm-4:00pm	ITERS-3 Overview
February 6, 2024	10:00am-12:00pm 1:00pm-3:00pm	Teacher, Teacher What Do You See? What is DAP?
March 6, 13, 27, 2024	5:00pm-7:00pm	West Virginia Early Learning Standards 
March 7, 2024	6:30pm-8:30pm	Utilizing the ERS

Raleigh County/MountainHeart Office, 300 N. Kanawha St. Suite 100, Beckley, WV 25801

January 11, 2024	10:00am-12:00pm 1:00pm-3:00pm	Emergency Preparedness Teacher, Teacher What Do You See?
January 16, 2024	11:30am-1:30pm	Utilizing the ERS
February 8, 15, 22, 29, 2024	6:00pm-8:00pm	Supporting Culturally Diverse Environment Module Series
March 13, 2024	5:00pm-7:00pm	ITERS-3 Overview

Braxton, Fayette, McDowell, Monroe, Pocahontas, Summers, Webster, and Wyoming Counties/See Trainings for other counties.

West Virginia Infant/Toddler Professional Development Program Revised Edition WVIT I-R

Face to Face

300 N Kanawha Street
Beckley, WV 24801



After a long WVIT I hiatus, the West Virginia Infant/Toddler Specialist Network is proud to present the newly revised edition of the West Virginia Infant/Toddler Professional Development Program (WVIT I-R)!

For Administrators (13 WVSTARS hours):

The WVIT I-R Administrator Modules provides administrators with information about the WVIT I-R for Caregivers, strategies that will help reinforce the infant/toddler caregivers' learning and support implementation of the program. This training focuses on: administrator's role and responsibilities as part of a team of professionals who share a common goal of providing high-quality programs for infants and toddlers in all childcare settings, role in planning and preparation, providing support for caregivers and reinforcing professional development for long-term sustainability.

For Caregivers (51 WVSTARS hours):

The WVIT I-R Caregiver Modules focus on childcare professionals who work with infants and toddlers from birth to 35 months of age. Participants of this program will learn: the importance of the role they play in the development of infants and toddlers, the importance of self-care for the child care provider, how the family structure and culture influence their work, providing safe, healthy environments for infants and toddlers including special needs, strengthen partnerships between families and child care providers, typical and atypical development of infants and toddlers, strategies to support optimal learning, lesson planning, and identifying and implementing elements of a quality program.

West Virginia Infant/Toddler Professional Development Program—Revised 2021

WVIT I-R

Presented Face to Face at 300 N. Kanawha St. Suite 100 Beckley, WV

The first caregiver session is scheduled for January 23, 2024. The director **and** staff member **must** be on the WV STARS Career Pathway **prior** to beginning the class and **must** email a copy of their WV STARS certificate prior to the first class.

Please note, a director **or** assistant director is **required** to attend and complete the revised Administrator's modules (**presented after February 1, 2021**) to send staff to WVIT I-R. The supervisor who attends the revised Administrator's modules **is required** to be present for the scheduled TACIT visits.

The WVIT I-R Administrator course has been scheduled for the following dates: January 8, 2024 **AND** January 10, 2024 from 3:00-6:00pm **BOTH** days. If the administrator that will be present for both TACIT visits has completed WVIT I-R Admin it does not need repeated.

All caregiver sessions will be held on Tuesdays from 3:00-6:30 pm.

Session 1: January 23

Session 2: January 30

Session 3: February 6

Session 4: February 13

Session 5: February 20

TACIT 1: February 21-March 4— Scheduled Individually

Session 6: March 5

Session 7: March 12

Session 8: March 19

Session 9: March 26

Session 10: April 2

Session 11: April 9

Session 12: April 16

TACIT 2: April 17– May 25—
Scheduled Individually

***Inclement weather: If school is cancelled or delayed in Raleigh County due to weather class will be**

For additional information or to register please contact Bethany Houchins by email at Bethany.D.Houchins@wv.gov or by phone at 681-238-6448 before December 20, 2023.



**JANUARY 4TH, 10TH, 17TH,
24TH & 31ST; 5PM-7PM**
**INFANT TODDLER
POSITIVE BEHAVIOR
INTERVENTION AND
SUPPORT MODULES**

What to Expect:

This is a five-part module training that will introduce participants to Positive Behavior Intervention and Supports for Infants and Toddlers. Strategies and tools will be discussed, as well as the research supporting this model.

Initial and follow up visits will be utilized as Proof of Learning.

Ten hours of STARS
credit and resources
provided

Limited spots
available

Directors must take
Overview webinar for
staff to attend

January 3rd at 1 pm

Register online at
www.wvstars.org

Trainer:

Kaylyn Jennings,
Behavior Consultant

**MOUNTAINHEART
COMMUNITY SERVICES**

300 North Kanawha St., Suite
100, Beckley, WV 25801

(304)425-3669 ext. 103

Kaylyn.M.Jennings@wv.gov

Register by Apr 15

West Virginia Infant/Toddler Professional Development Program WVIT II

Presented Face to Face at Mountainheart Community Services,

248 Red Oaks Shopping Center Ronceverte, WV

WVIT II Professional Development Program is a 45 hour course for Infant/Toddler Caregivers who has completed WVIT I or WVIT I-R. In this class there are 35 classroom hours and a 20-hour practicum that equals to 10 classroom hours. WVIT II builds on key concepts presented in WVIT I related to building respectful, nurturing relationships with children, families and colleagues. Information and strategies from relationship based resources such as the Program for Infant Toddler Care (PITC) and the Pyramid Model from the Center on the Social and Emotional Foundations for Early Learning (CSEFEL) is incorporated throughout the training sessions. **Must attend at least 9 sessions including sessions 1 & 10**

The director **and** staff member **must** be credentialed on the WV STARS Career Pathway **prior** to beginning the class and caregiver **must** email a copy of their WVIT I or WVIT I-R certificate to show WVIT I completion.

Please note, a director **or** assistant director must have completed the WVIT II Administrator's module to send staff to WVIT II.

The Administrator session will take place on February 1, 2024 from 1:00-3:00PM at the Lewisburg, Mountainheart office.

Caregiver Modules **All sessions are 1:00-4:30pm**

Session 1: February 8 **Session 6:** March 14

Session 2: February 15 **Session 7:** March 21

Session 3: February 22 **Session 8:** March 27 (**Wednesday**)

Session 4: February 29 **Session 9:** April 4

Session 5: March 7 **Session 10:** April 11

For additional information or to register please contact Kathy Milam ex:208 at 681-238-6448 or by e-mail at katherine.milam@wv.gov by January 12, 2024.



**WV Elements of
Family Child Care
Series**

Location:

**1411 N Walker St.
Princeton**

**37 WVSTARS
Hours**

**Resources
Available Upon
Completion**

**FEBRUARY MARCH
WV ELEMENTS OF FAMILY
CHILD CARE SERIES**



WVEFCC

This series provides family and facility childcare providers a comprehensive overview of Curriculum for Family Childcare and the *Family Child Care Environment Rating Scale Revised*. Participants of these sessions must complete all seven sessions and two 1-hour visits to be eligible for a certificate and resources.

Training Dates and Times:

- Session 1: Wednesday, February 7, 9:00am – 1:00pm
- Session 2: Wednesday, February 14, 9:00am – 1:00pm
- Session 3: Wednesday, February 21, 9:00am – 1:00pm
- Session 4: Wednesday, March 6, 9:00am – 1:00pm
- Session 5: Wednesday, March 13, 9:00am – 1:00pm
- Session 6: Wednesday, March 20, 9:00am – 1:00pm
- Session 7: Wednesday, March 27, 9:00am – 1:00pm

This course meets the requirements for the Credential Specialization in Family Child Care.

Register on STARS or
Contact
Evelyn Davis, TRAILS Early
Childhood Specialist
Phones: 681-238-4668
304-228-9018
evelyn.s.davis@wv.gov

Supporting Culturally Diverse Environments Module Series

8 WV STARS Hours

In childcare, we often miss the importance of understanding an all-inclusive environment. In this module series, we are going to discuss the difference of diversity, cultural, equality, and equity within our childcare settings. You will learn the importance of creating an environment, using ERS tools and gain knowledge in culturally supported activities that changes the way children interact and provide support to children of all cultural backgrounds.

Dates, Time, and Location:

February 8th, February 15th,
February 22nd, February 29th from
6:00pm-8:00pm at 300 N. Kanawha
St. Suite 100 Beckley, WV 25801

Register On:

www.wvstars.org or email Lena
Graham at
Lena.D.Graham@wv.gov



West Virginia Early Learning Standards Framework Pre-K with Lesson Planning Module

In this 3-part module series geared towards Pre-K teachers, you will receive an in-depth look at the WV Early Learning Standards Framework. You will learn about each of the content areas, domains, clusters, and standards and how to connect them to a lesson plan. As a group, we will brainstorm ways teachers can meet the goals in the standards. At the end of the series, teachers will have completed a lesson plan to take with them to reference when planning future lessons and activities.



Dates, Times, and Location:
March 6th, March 13th, March 27th
5:00pm-7:00pm
MountainHeart Community Services
1020 Broad St. Summersville, WV

Register on www.wvstars.org or email Lena Graham
at Lena.d.graham@wv.gov





JANUARY FEBRUARY MARCH
**BUILDING A FIRM
FOUNDATION WITH
TRAILS**

Four Building Blocks

The four Building Foundation blocks will focus on topics ranging from theory/research, organization of the home and the day, what children are learning, and building positive relationships with the children and their families.

To schedule your training please call your local TRAILS Early Childhood Specialist.



**Attention Home
Providers**

**Earn 4 hrs. of WV
STARS training**

**Training in your
home**

**Receive a Creative
Curriculum Set**

McDowell, Mercer, Raleigh,
Wyoming Counties Call:

Evelyn Davis, TRAILS ECS

Office: 681-238-6448

Cell: 304-228-9018

Braxton, Fayette, Greenbrier,
Monroe, Nicholas,
Pocahontas Summers,
Webster

Samantha McClure, TRAILS
ECS

Office: 304-647-3800

Cell: 304-228-901

The Director's Toolbox

Lewisburg MountainHeart Office
9:00 AM - 11:00 AM

April 2024

SUN	MON	TUE	WED	THU	FRI	SAT
31	1	2 Module 1	3	4 Module 2	5	6
7	8	9 Module 3	10	11 Module 4	12	13
14	15	16 Module 5	17	18 Module 6	19	20
21	22	23 Module 7	24	25	26	27
28	29	30	1	2	3	4



WEST VIRGINIA
Child Care Credential

To register, please visit
www.wvslars.org
or contact Brooklyn Conley at
(681)-238-6448
or Brooklyn.A.Conley@wv.gov

The Director's Toolbox is a module series that is intended solely for administrators in a childcare center. This program is designed to improve the quality of early care and education for children in West Virginia. Director's Toolbox is worth 14 hours of WV STARS credit.

WV Quality Tiered Reimbursement System



The WV Tiered Reimbursement System is a quality initiative that offers subsidy payments to childcare programs who demonstrate that they meet higher standards of care.

Who is Eligible?



- CHILDCARE HOMES, FACILITIES, & CENTERS.
- MUST HAVE A 2-YEAR OPERATING LICENSE.
- MUST BE IN OPERATION FOR AT LEAST 1 YEAR.
- MUST HAVE A CURRENT PROVIDER SERVICE AGREEMENT.
- MUST ENROLL CHILDREN WHO RECEIVE SUBSIDIES FOR CARE.



- GRANT OPPORTUNITIES
- MARKETING TOOL
- INCREASED WAGES
- HIGHER QUALITY CARE
- PAYMENT BONUS



Brooklyn.A.Conley@wv.gov
681-238-6448 EXT. 205



Child Care Health Educator Trainings

January, February, March 2024

Online Trainings

January

Let's Make a Menu – Harmony Vance

8th 6:30 – 8:30 pm

Safe Sleep Practices – Harmony Vance

23rd 6:30 – 8:30 pm

Infant Feeding – Renee Stonebraker

31st 12:00 – 1:00 pm

February

New Recipe's 1 – Renee Stonebraker

13th 6:30 – 8:30 pm

Childhood Obesity – Renee Stonebraker

21st 12:00 - 1:00 pm

New Recipes 2 – Harmony Vance

27th 6:30 – 8:30 pm

March

Stress Management – Harmony Vance

4th 6:30 – 8:30 pm

Indoor and Outdoor Safety – Harmony Vance

20th 12:00 – 2:00 pm

Breastfeeding Basics – Renee Stonebraker

26th 6:30 – 8:30 pm

In Person Trainings

January 16

Let's Move – Harmony Vance

6:30-8:30

300 N Kanawha St.

Beckley, WV 25801

February 22

Bed Bugs and Beyond – Harmony Vance

6:30-8:30

300 N Kanawha St.

Beckley, WV 25801





WV Child Care Credential



The Division of Early Care and Education understands the importance of the work you do, and it wants to help produce the best caregivers and childcare programs possible for West Virginia families. With that in mind, the Division of Early Care and Education has created a voluntary program, the West Virginia Child Care Credential, that recognizes individual childcare providers who go beyond the requirements of State licensing and registration regulations for training, education, and experience.

The four major goals of the Credential Program are to:

- Help develop a professional workforce qualified to provide care for young learners
- Improve your status and compensation
- Recognize your professional learning and ongoing education toward new innovations in child care and early learning
- Give you a structure for growth

Here is the list of trainings for the general credential:

- ⇒ The Growing Brain
- ⇒ Early Learning Standards Framework Overview Or WV Early Learning Standards Framework Overview
- ⇒ Pre-Service Training- Basic Health and Safety in Childcare
- ⇒ Making a Difference: Mandated to Report: Responsibility to Prevent Child Abuse and Neglect (must have been attended after 2018)
- ⇒ WVIT Professional Development Program: Ethics (*onDemand course*)
- ⇒ Medication Administration (must have attended in the last three years)
- ⇒ Understanding ACEs (Adverse Childhood Experiences) ACEs 101
- ⇒ RR Spreading HOPE: Healthy Outcomes from Positive Experiences

If you see this symbol next to a listed training, it indicates that the training meets the requirement for the Child Care Credential. Specific requirements are necessary to receive the credential.





NEWS ALERT/ Credential Specializations



The Division of Early Care and Education understands the importance of the work you do, and wants to help produce the best caregivers and child care programs possible for West Virginia families. The Division is pleased to announce West Virginia Child Care Credential Specializations! Once you have attained your West Virginia Child Care Credential, providers can continue their journey with a Specialization: - Director's Specialization – for child care program directors - Infant Toddler Specialization – for caregivers working with Infants and Toddlers - Preschool Specialization – for caregivers working with Preschoolers - Family Child Care Specialization – for Family Home Child Care providers Once you achieve your specialization credential status, a bonus of \$250.00 is available through submission of verification to your local Child Care Resource and Referral Program.

For more information about this exciting new initiative, please contact the following MountainHeart Child Care Resource and Referral Offices: Beckley Ragland Rd. 253-7654 Beckley Kanawha Plaza (Professional Development) 681-238-6448 Princeton 425-3669 Matheny 682-8271 Lewisburg 647-3800 Summersville 872-9200 Thank you for all that you do for West Virginia families and your communities. Your service is greatly appreciated!



Pathway to Earnings

Increase your Earnings

Available to child care providers and directors working in a licensed child care center, licensed child care facility, or registered family child care home.



WV Elements of Family Child Care Series	\$75
Mind in the Making	\$100
WVIT I	\$100
WVIT II	\$250
CDA	\$500
ACDS Dept. of Labor Certificate	\$500
AA or AAS in ECE* Degree	\$1000
BA or BS or Regents in ECE*	\$1500
MA or MS in ECE* Degree	\$1750
Ph. D. or Ed. D. in ECE* Degree	\$2000

* See reverse for details

Awarded Based on
Funding Availability

Phone: 304-522-7827

Email: scholarship@rvcds.org

www.wvstars.org

Pathway to Earnings Criteria

Please note you must meet **all** of the following criteria to be eligible to receive the Pathway to Earnings Payment:

- ☐ Currently working in a WV licensed child care center, licensed child care facility, or family child care home, serving subsidized children as one of the following:
 - ☐ Teacher/Assistant Teacher/Teacher's Aide
 - ☐ Director/Assistant Director
 - ☐ Family Child Care Provider

- ☐ Has worked for 12 consecutive months prior to application within the field of early care and education as outlined above for a minimum of one of the following:
 - ☐ 20 hours per week if working as a director/assistant director/teacher/assistant teacher/teacher's aide with no more than a 45 day employment lapse
 - ☐ 20 hours per week if working as a family child care provider with no more than a 90 day employment lapse

- ☐ Has an active Career Pathway Credential

- ☐ Has earned a qualifying degree or certificate (please note degrees must be earned from a Regionally Accredited Institution):
Degree or Certificate

- ☐ WV Elements of Family Child Care Series (*must be working as a family child care provider to claim*)
- ☐ Mind in the Making
- ☐ WVIT I (*must be working with Infants and Toddlers to claim*)
- ☐ WVIT II (*must be working with Infants and Toddlers to claim*)
- ☐ CDA (current)
- ☐ ACDS Department of Labor Certificate
- ☐ AAS/AA in ECE*
- ☐ BA/BS in ECE* or RBA with ECE emphasis
- ☐ MA/MS/M.ED in ECE*
- ☐ Ph.D. or Ed. D. in ECE*

* Accepted ECE Degree Programs include: Child Development; Child Development & Family Studies; Early Childhood; Early Childhood Development; Early Childhood Education; Early Childhood Special Education

If this is not the first time you have applied for and received the WV STARS Pathway to Earnings payment for this degree or certificate you must also have met one of the following in the past 12 months.

- ☐ Has completed 18 hours of WV STARS Training in the last 12 months (for those working in Licensed Child Care)
- ☐ Has completed 11 hours of WV STARS Training in the last 12 months (for those working in/ as Family Child Care Home or Family Child Care Facility)
- ☐ Has completed one college credit course toward a higher degree in ECE in the last 12 months (must submit documentation confirming completion)

This program is being presented with financial assistance as a grant from the WV Department of Health and Human Resources and is administered by WV Early Childhood Training Connections and Resources, a program of River Valley Child Development Services.

WE ARE HIRING MENTORS

Mentors support ACDS students that do not have director supervisors. Mentors meet with students monthly and offer guidance as needed.



Minimum Requirements

- ACDS JOURNEYPERSON OR BA IN ECE
- CLASSROOM EXPERIENCE

Mentor Compensation

- MENTORS ARE CONTRACTED FOR A SIX MONTH PERIOD
- COMPENSATED \$200.00 UPON FULFILLMENT OF SERVICE AGREEMENT
- REIMBURSED MILEAGE AT CURRENT GSA PER DIEM

Mentor Responsibilities

- PROFESSIONAL ROLE MODELING
- VISIT MENTEE'S ACDS CLASS ONCE PER SEMESTER
- COMPLETE SUPERVISOR EVALUATIONS EACH SEMESTER
- VERIFY AND SIGN STUDENT ON-THE-JOB TRAINING LOGS
- MEET WITH MENTEE A MINIMUM OF TWO HOURS PER MONTH
- VIRTUAL AND IN-PERSON MENTORING OPTIONS

*FOR FULL LIST OF EXPECTATION REVIEW MENTOR JOB DESCRIPTION
AVAILABLE ON ACDS WEBSITE.*

ACDS Contact Information

- Phone - 304.523.0433
- Email - wwacds@rvcds.org
- Website - www.wwacds.org





JOIN OUR LOCAL COUNCILS



Meetings

Small groups meet twice a year to discuss the implementation of ACDS in their counties.

Members

Members include directors, child care resource & referral, BOE, head start, instructors, journeypersons, and family child care providers.



JOIN US NOW!

To find out more information about the local council in your area, visit the ACDS website and go to the local council page under resources.

www.wvacds.org



RIVER VALLEY CHILD DEVELOPMENT SERVICES



ACDS REGISTRATION

ABOUT ACDS

ACDS is a 4 semester apprenticeship program for individuals working directly with children birth to age 12 for a minimum of 20 hours a week. Classes are one evening a week for 15 weeks a semester. Virtual classes are available for counties that do not offer an in-person option.

PARTICIPATION

Registration for the Fall 2023 semester will open June 1 and run through the first of August. For the Fall 2023 class schedule and program information, visit the ACDS website.

REGISTRATION



STEP ONE

Visit the WV STARS training calendar and search self-paced courses for all ACDS orientations.



STEP TWO

Complete registration that is linked at the end of each orientation.



STEP THREE

Submit \$25.00 registration fee to ACDS program. Checks and cards are accepted. Credit card form is on ACDS website.



304-523-0433



www.wvacds.org



wwacds@rvcds.com

Are your kids COVERED?

WV Medicaid and CHIP offers free or low-cost health insurance for children and teens up to age 19.



Children can get



Regular
check ups



Immunizations



Doctor and
dentist visits



Mental health
services



Hospital care



Prescriptions

and more!

If you're currently covered:

Families must renew their eligibility and confirm their contact information.

If you don't have coverage or have been denied before:

Enrollment is year-round. Apply today to find out if you're eligible.



Follow these easy steps to ensure your kids have health coverage:

1. Scan here!
2. Click "Apply Now"
3. Update and confirm your contact info




Renew your Medicaid or CHIP coverage today!

Make Sure Your Coverage Continues.

Millions of families may lose their Medicaid and CHIP insurance coverage just because they didn't update their mailing address. To stay informed of the changes and to keep your insurance coverage, make sure your contact information is up to date.

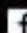


If you are not sure which coverage you have ... We're here to help.
Medicaid 1-877-716-1212 | CHIP 1-877-982-2447

 ConnectingKidsToCoverageWV.org



**CONNECTING KIDS
TO COVERAGE WV**

 Follow us on Facebook | [#InsureKidsWV](https://www.facebook.com/InsureKidsWV)

801 Country Club Road, South Charleston, WV 25303 | 304-495-1400

Connecting Kids to Coverage West Virginia is operated by the Division of Medicaid and Medical Services (DMMS) of the U.S. Department of Health and Human Services (HHS) on behalf of the American Indian and Alaska Native Children's Health Study (AI/AN CHS) and the American Indian and Alaska Native Children's Health Study (AI/AN CHS) on behalf of the American Indian and Alaska Native Children's Health Study (AI/AN CHS).



APPLY TODAY



ConnectingKidsToCoverageWV.org

Locations

Administrative Office

P. O. Box 1509 • Oceana, WV 24870 – (Mailing Address)
33 MountainHeart Lane • Matheny, WV 24860 – (Shipping Address)
Phones: 304-682-8271, 1-800-834-7082, Fax: 304-682-8274

Beckley Office

P. O. Box 966 • 228 Ragland Road
Beckley, WV 25801
Phones: 304-253-7654, 1-888-799-9217, Fax: 304-253-7690

Professional Development Training Division

300 N. Kanawha Street • Beckley, WV 25801
Phone: 681-238-6448

Princeton Office

1411 North Walker Street • Princeton, WV 24740
Phones: 304-425-3669, 1-800-738-8531, Fax: 304-425-2301

Summersville Office

1020 Broad Street • Summersville, WV 26651
Phones: 304-872-9200, 1-866-598-4452, Fax: 304-872-9205

Lewisburg Office

P. O. Box 1610 • Lewisburg, WV 24901
248 Red Oaks Shopping Center, Suite 6 • Ronceverte, WV 24970
Phones: 304-647-3800, 1-855-843-0720, Fax: 304-647-3004



Margaret Younce
Program Director



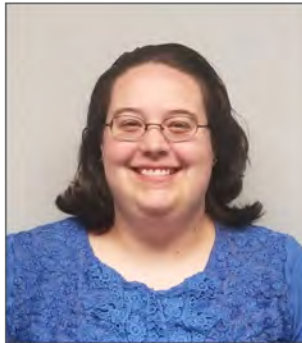
Betty Hamrick
Assistant Program Director



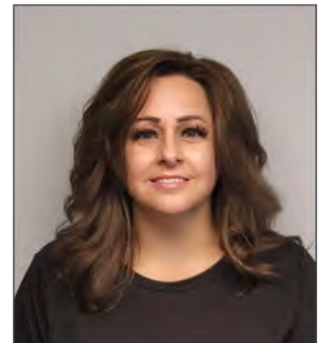
Sara Mathes
*Professional Development
Team Supervisor*



Lena Graham
Early Childhood Specialist



Bethany Houchins
Infant/Toddler Specialist



Kathy Milam
Infant/Toddler Specialist



Evelyn Davis
*TRAILS Early
Childhood Specialist*



Samantha McClure
*TRAILS Early
Childhood Specialist*



Sandra Cox
TRAILS Associate



**Professional
Development
Team (South)**



Brooklyn Conley
*Quality Improvement
Specialist*



Maxann Hamrick
Behavioral Consultant



Kaylyn Jennings
Behavioral Consultant