

Experience Adventures in Family Child Care!

An Introductory Presentation for Potential Providers



MountainHeart Child Care Resource And Referral



Thank you for your interest in providing quality child care!

First, let's answer some very important questions before beginning your journey as a child care provider.

- ✓ Do you enjoy working with children and families?
- ✓ Have a high energy level?
- ✓ Pay attention to what children are doing?
- ✓ Have good communication skills?
- ✓ Willing to learn more about a child's development?
- ✓ Learn Basic First Aid and CPR?
- ✓ Able to feed children nutritious meals and snacks?
- ✓ Willing to complete required attendance sheets/payment forms to submit on a monthly basis?

These are only a few of the basic questions for you to think about as you consider a career in providing quality child care services!

Starting your adventure!

Hopefully, you answered yes to the previous questions and are eager to learn more about getting started in your child care adventures!



Yes!



Most Common Provider Types

- ❖ Family Child Care Home: A facility which is used to provide nonresidential child care for compensation in the providers home. The provider may care for four to six children, including children who are living in the household, who are under six years of age. No more than two of the total number of children may be under twenty-four months of age.
- ❖ Family Child Care Facility: Any facility which is used to provide nonresidential child care for compensation for seven (7) to twelve (12) children for four or more hours per day, including children who are living in the household who are under six years of age. No more than four (4) of the total number of children may be under 24 months of age.
- ❖ Child Care Center: A facility operated for the care of 13 or more children on a nonresidential basis.



Child Care Rate Structure

Child Care Policy – Effective March 1, 2016 APPENDIX B – CHILD CARE RATE STRUCTURE

TYPE OF CARE	RATE TYPE	INFANT (0-24 Months) Day	TODDLER (25-36 Months) Day	PRE-SCHOOL (37-59 Months) Day	SCHOOL-AGE (60 Months & Up) Day
Family Child Care Home	Tier I	\$25	\$22	\$22	\$20
	Tier II	\$27	\$24	\$24	\$22
	Tier III - Accreditation	\$29	\$26	\$26	\$24
Family Child Care Facility	Tier I	\$27	\$25	\$25	\$25
	Tier II	\$29	\$27	\$27	\$27
	Tier III - Accreditation	\$31	\$29	\$29	\$29
Child Care Center	Tier I	\$32	\$30	\$28	\$25
	Tier II	\$34	\$32	\$30	\$27
	Tier III - Accreditation	\$36	\$34	\$32	\$29
Out of School Time Child Care	Tier I				\$14.50
Informal/Relative Child Care	Tier I	\$7.50	\$6.00	\$6.00	\$6.00
In-Home Child Care	Tier I	\$20.00	\$18.00	\$18.00	\$18.00
Available Incentive Rates	Documented Special Needs	Additional \$2.00 added to daily tier rate	Non-Traditional Hours	Additional \$4.00 per qualifying day	

Program Requirements

Family Child Care Provider Qualifications

- ❖ You must be 18 years of age or older
- ❖ Provide the care in your home
- ❖ You must pay for your own taxes and social security
- ❖ Everyone in the home 18 years of age or older must be fingerprinted and have no serious criminal history
- ❖ No one in the home may have a history of abusing or neglecting a child or an adult
- ❖ You must have a physical exam
- ❖ Your home must meet the regulations set forth by WV DHHR
- ❖ Smoking is not permitted in a family child care home while children are in care
- ❖ Must be able to read and write and understand the rules, agreements, payment forms and other paperwork involved in the program
- ❖ Cannot use any form of physical discipline, such as spanking, hitting or slapping
- ❖ Complete the required amount of training set forth by WV DHHR



Core Knowledge and Competencies for Early Childhood Providers

A family child care provider must complete eight (8) hours of approved training each year.

Providers can select training from the following core competency areas:

- Child Growth and Development
- Health, Safety, and Nutrition
- Environment and Curriculum
- Child Observation and Assessment
- Family and Community Relationships
- Administration and Management
- Professionalism and Leadership

Within three months a family child care provider must obtain approved training in first aid that includes rescue breathing and choke saving.

Child Care Resource and Referral Professional Development Team

TRAILS - Traveling Resource and Information Library System. TRAILS staff, which include an Early Childhood Specialist and TRAILS associate, travels twelve counties to provide resources, toys, books, games, equipment, technical assistance and professional development on site.

Behavior Consultants - Provides on-site consultation to early childhood providers regarding social/emotional development, associated behaviors, and provides strategies to support caregivers.

Infant/Toddler Specialists - Provides professional development designed for infants and toddlers ages birth to 35 months. WVIT I and WVIT II are a series of classes for providers caring for this age group.

Early Childhood Specialists – Provides core competency training and technical assistance to providers.

QIS- Outreach and Support Specialist - Responsible for assisting providers in achieving higher quality standards and advancing to Tier II status.

Health and Safety Grants

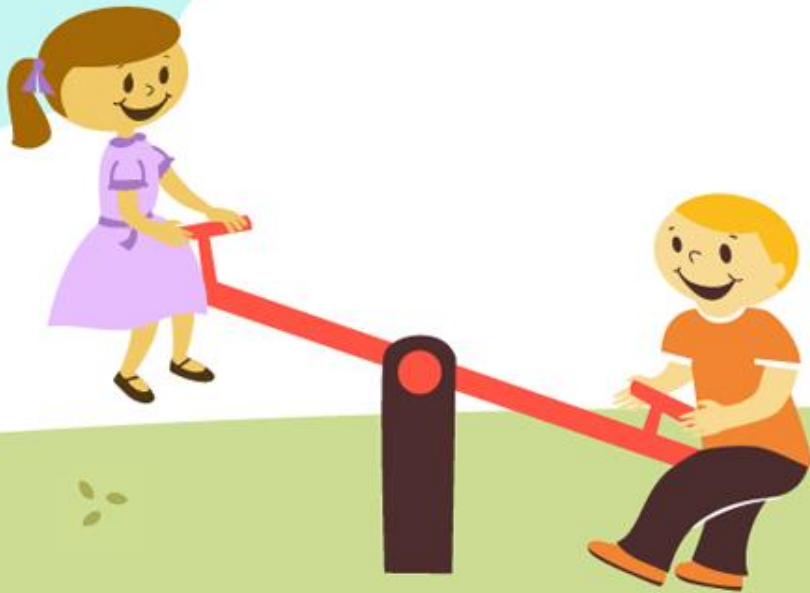
Health and Safety Grants, which are funded by the Department of Health and Human Resources, are available for Family Child Care Providers to assist them in meeting regulatory and licensing requirements for operating a child care program.

A provider must be approved by the Department of Health and Human Resources to be eligible for grant funding. Once eligible, the grant amounts are generally \$250.00 and are to be used for the purchase of items needed such as smoke detectors, first aid kits, fire extinguishers, as well as many other items to meet regulation requirements.



Learn more about beginning your adventures in family child care!

Next Steps



Step One - WV CARES

- ❑ Step One – Is the Fingerprinting process. The provider and all adult household members/residents eighteen years of age and older will need to be fingerprinted through WV CARES. WV CARES is the vendor approved by WV DHHR to process certain background checks.

To begin the fingerprinting process, the provider must set up an Administrative Account by calling 1-304-558-2018 or email at wvcares@wv.gov

WV CARES has multiple stages that must be completed before being fingerprinted. The provider support specialist is available to assist you with this process.



West Virginia
STARS

State Training and Registry System

Step Two - Register for WV STARS

All training received through the Child Care Resource & Referral office is registered with the West Virginia State Training and Registry System (WV STARS)

All persons attending training will need to have a STARS number and register for the trainings by logging on to WVSTARS.org.



Step Three - Complete Pre-Service Training

- ❑ Step Three – Child Care Providers will need to complete a Pre-Service Training- Basic Health and Safety in Child Care. This is a self-paced training and consists of 10 modules. After receiving your WV STARS number, Child Care Providers will need to register for this Pre-Service training through WV STARS.

Step Four - Child Care Provider Orientation

□ Step Four – Schedule to attend provider orientation at the CCR&R office in order to:

- begin the registration process
- complete required forms
- learn about educational opportunities, hands on training, achieving and maintaining higher quality standards, and other valuable resources.



Step Five - Payment form training

- ❑ Step Five – Once you have been approved by the DHHR Child Care Regulatory Specialist as a Registered Family Child Care/Subsidized provider, you will need to contact your local MountainHeart Child Care Resource and Referral office to complete the payment form process training.



Review of Steps Needed to Get Started



Provider Support Specialist

Remember, if assistance is needed in your journey to becoming a registered/subsidized child care provider, please contact the Provider Support Specialist!

The Provider Support Specialist is available to assist new potential child care providers in meeting all the steps required to becoming a registered/subsidized child care provider.

The Provider Support Specialist is also available to assist existing registered/subsidized child care providers in meeting requirements to maintain their current Certificate of Registration.

Contact the Provider Support Specialist to schedule an appointment or to discuss your journey into becoming a quality child care provider!

Contact Information:
Telephone: 304-425-3669 Ext.114
Kaitlyn.M.Broyles@wv.gov



▪ QUESTIONS?



For Assistance With Child Care Subsidy Questions

Contact name:	Title:	Telephone Numbers:	Child Care Resource and Referral, Region VI
Susan McCoy	Supervisor and Case Management Auditing Coordinator, Health and Safety Grant Coordinator	304-647-3800 or 1-855-843-0720	Greenbrier, Pocahontas, Summers, and Monroe Counties
Donna England	Supervisor and Audit Specialist	304-682-8271 or 1-800-834-7082, Or, 304-253-7654 or 1-888-799-9217	Wyoming, McDowell, Raleigh, and Fayette Counties
Randy Brown	Supervisor and Audit Specialist	304-425-3669 or 1-800-738-8531	Mercer County
Kelly Maynor	Supervisor and Audit Specialist	304-872-9200 or 1-866-598-4452	Nicholas, Webster and Braxton Counties

Sources:

Adventures in Better Child Care, An Introductory Handbook for Family Child Care in West Virginia: WV DHHR/Bureau for Children and Families/Division of Early Care and Education

Child Care Subsidy Policy & Procedures Manual, WV DHHR/Bureau for Children and Families Policy/Division of Early Care & Education.

Experience Adventures in Family Child Care – An Introductory Presentation for Potential Providers Power Point, was created by the MountainHeart South Child Care Resource and Referral Management Team, July 2018.. R-Nov.2019. R-Oct.2020. R-Jan.2021.



MountainHeart Child Care Resource and Referral is a program of MountainHeart Community Services, Inc.
This program is being presented with financial assistance as a grant from the WV Department of Health and Human Resources

